

please see help pages in the web app

Web: sunflowltd.co.uk
Tel: 0800 158 8272

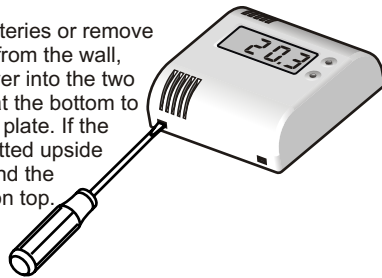
Hereby, Sunflow Limited declares that the radio equipment types CUI1 and CTH3 are in compliance with Directive 2014/53/EU. The full text of the EU declaration of conformity is available at the following internet address: sunflowltd.co.uk

Start here

Follow the steps below to install your system. Turn over for a brief guide to using the system. Once you have your system online you will find additional help pages in the app.

1 Remove thermostat back plate

To change batteries or remove your thermostat from the wall, push a screwdriver into the two recessed holes at the bottom to release the back plate. If the back plate was fitted upside down you may find the recessed holes on top.



2 Insert thermostat batteries

Insert 2 new high quality AAA alkaline batteries. Do not refit the backplate yet.

WARNING

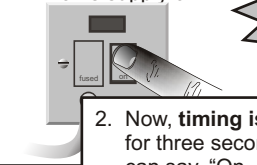
The manufacturer is not responsible for damage due to corrosion. Battery leakage will cause permanent damage. To help avoid this:

- Replace the batteries annually, even if there is not a low battery warning. Remove failing or flat batteries immediately.
- Always fit a pair of new high quality alkaline batteries from the same pack. Never mix new and old batteries, or batteries of different brands or types.
- Never attempt to revive alkaline batteries by heating, crushing or recharging.

3 Pair heater with thermostat

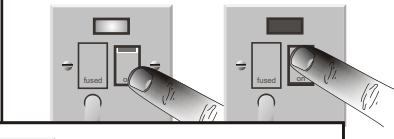
You **must** make a wireless connection between your heater and your thermostat.

1. Switch your heater's mains supply off.

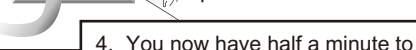


If you don't do this the heater is not going to work

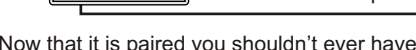
2. Now, **timing is critical**: switch it on for three seconds then off again. You can say, "On, one thousand, two thousand, three thousand, off".



3. Switch it back on. The light on the heater should be flashing; if it is not flashing restart the procedure.



4. You now have half a minute to press the button on the back of the thermostat. Once pressed, the light on the heater will immediately stop flashing and possibly change colour depending on the settings and the room temperature.

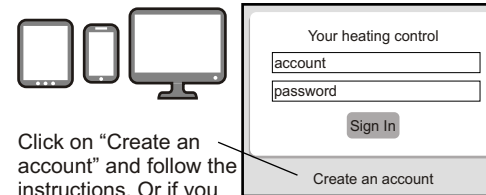


Now that it is paired you shouldn't ever have to do it again, though you may also wish to follow this procedure if you add more heaters or move your heater to another thermostat.

4 Getting online

Plug the power cable into the gateway and fit its antenna pointing upwards. Connect your gateway to your router using the network cable.

With any browser go to the address bar and input: <https://app.sunflowltd.co.uk>



Click on "Create an account" and follow the instructions. Or if you already have an account use "Add Gateway" on the menu.

5 Pair thermostat with gateway and test system

It is best to do this when you are online. Go to the "System setup" from the menu, click "Add thermostat" and follow the instructions. From this screen you can give your gateway and each thermostat a name. Check that the system works by switching heaters on and off from the app.

If you are not online you can pair the thermostat and gateway by pressing PAIR on the gateway with the supplied pin then pressing the button on the back of the thermostat. To test the system press and hold PAIR, and while it is pressed, press MODE. L3 starts to flash red. All thermostats are on full-power for a period of 10 minutes or until you cancel the test by pressing MODE.

6 Choose thermostat position

Position on the wall in the same room as the heater. It should be where its temperature will not be changed by local effects. Avoid:

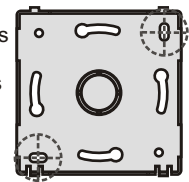
- Draughty places near windows, doors and vents.
- Places near the heater itself or any other heat sources in the room.
- Places where the sun will shine on it.
- Places where, for example, it could be hit by a door.
- Places where it may get wet.

The maximum wireless connection distance from a thermostat to a heater or to a gateway depends on the surrounding objects and the building. It can be up to 30 meters in some installations.

Before permanently fixing it, hold the thermostat in the chosen position and adjust it to make your heater turn on. If it does not turn on, consider a different position.

7 Fix thermostat to the wall

Mark through the screw holes on the rear. Drill and plug the wall to accept two No. 6 screws and mount the wall plate. Clip the thermostat back onto the wall plate.



clips at bottom

Your wireless thermostat

Your thermostat gives precision control of the zone temperature. Being battery powered, it is completely wireless. Once set up, it will keep to its 7 day schedule even if the gateway is switched off.

Model CTH1 has no buttons or display for where occupants do not need to make adjustments.



Model CTH3 has a display and buttons so the occupant can see and adjust the temperature.

The thermostat normally shows the measured temperature. When you press a button it flashes the set temperature. Press a button while it is flashing to adjust the set temperature between 4°C and 30°C or -- for no heating. Sometimes you are not permitted to adjust depending on app overrides. Your adjustment usually starts a temporary override of the normal scheduled temperature, depending on how it was set up from the app.



The left hand dot flashes while there is a temporary override. You can cancel the override by pressing both buttons at the same time.



The bars on the left show the heater's current power.



Your Heater

The heater has a control light which may be:

- green - when no heat is needed
- yellow - when some heat is needed to maintain the room temperature
- red - when it is on at full power

The light is normally on continuously, but may wink off or flash as described below.

The thermostat sends a radio signal. When the heater receives the signal, the light winks off briefly and may change colour.

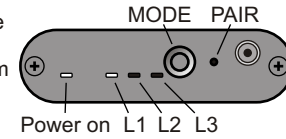
When the heater is on, the light is always green until the first signal.

A slow flashing green light means that the heater has not received a radio signal for at least 5 minutes. Follow the installation steps to fix this.

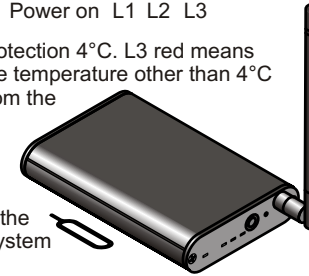


Your gateway

Normally the "Power on" and L1 lights are green. Pressing MODE changes from L1 to L2 flashing green which means all thermostats are overridden to frost protection 4°C. L3 red means some system override temperature other than 4°C has been selected from the app. Pressing MODE again cancels any system override.



PAIR is pressed with the supplied pin during system setup.



Cleaning

Clean only with a soft, lint-free cloth. Avoid getting moisture on buttons or openings. Do not use sprays, liquids or abrasives; doing so may cause damage.